



AMICO ROTARY-WING WATER METER HORIZONTAL WOLTMAN TYPE WATER METER

TYPE LXSG 50E TYPE LXLC 80 - 300E G2 Dry Dial Water Meter



Special Features :

- Digital-Wheel counter mechanism for direct reading
- Large range for measuring, good accuracy in flowrate
- High continuous flow capacity, lower head loss
- Steady curve characteristics
- Performance of type LXLC water meter is up to standard ISO 4064 B

Meter Design :

- Solid and robust design, long service guaranteed
- Selected high quality materials guarantee
- Universal interchangeable measuring insert
- Outer calibration device



Metrological Data :

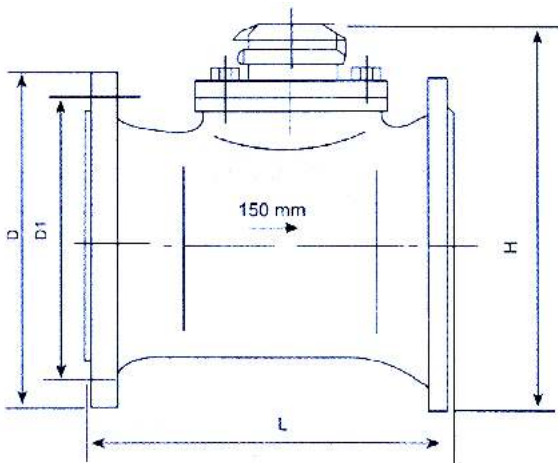
| Meter Size DN mm | Measuring Class | Nominal Flowrate Qn m ³ /h | Minimum Flowrate Qmin | Transitional flowrate Qt | Min. reading | Max. reading |
|------------------------|--------------------|--|-----------------------------|--------------------------------|-----------------|-----------------|
| | | | m ³ /h | | | |
| 50 | A | 15 | 1.2 | 4.5 | 0.01 | 999999.99 |
| | B | | 0.45 | 3 | | |
| 80 | A | 40 | 3.2 | 12 | | |
| | B | | 1.2 | 8 | | |
| 100 | A | 60 | 4.8 | 18 | | |
| | B | | 1.8 | 12 | | |
| 150 | A | 150 | 12 | 45 | 0.1 | 999999.99 |
| | B | | 4.5 | 30 | | |
| 200 | A | 250 | 20 | 75 | | |
| | B | | 7.5 | 50 | | |
| 250 | A | 400 | 120 | 32 | 0.1 | 999999 |
| | B | | 80 | 12 | | |
| 300 | A | 600 | 180 | 48 | | |
| | B | | 120 | 18 | | |
| 400 | A | 1000 | 300 | 80 | | |
| | B | | 200 | 30 | | |

Working Condition :

Water Temperature : For Cold Water ≤ 30° C
Water Pressure : ≤ 1 MPa

STANDARD ISO 4064

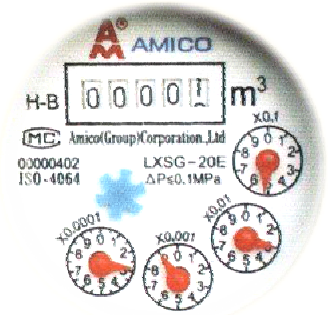
Dimensions and Weights :



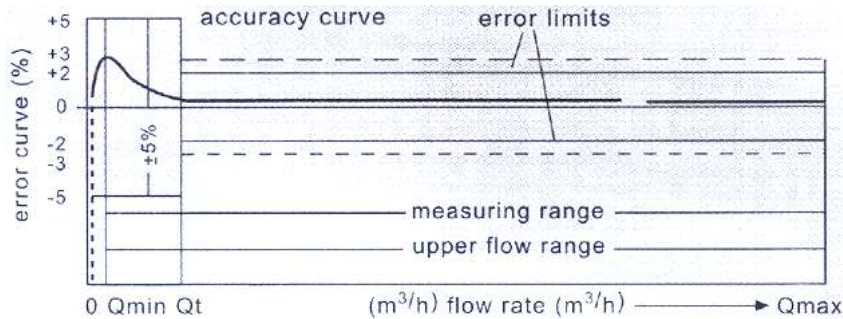
| DN mm | Length (L) mm | Height (H) mm | connecting flange | | | Weight kg |
|----------|---------------------|---------------------|-------------------|-------------------------|-------------------------|--------------|
| | | | outer dia, D | bolt circle dia, D 1 | Conneting bolt x pcs | |
| 50 | 230 | 190 | 165 | 125 | M16 x4 | 12.8 |
| 80 | 225 | 269 | 200 | 160 | M16 X8 | 15.4 |
| 100 | 250 | 279 | 220 | 180 | M16 x 8 | 17.6 |
| 150 | 300 | 309 | 285 | 240 | M20 X 8 | 28 |
| 200 | 350 | 375 | 340 | 295 | M20 x 8 | 38.5 |

Features curve diagram :

Reading error : The Max. reading error between Q_{max} (max. flowrate) and Q_t (Transitional flowrate) for cold water meter is $\pm 2\%$ The Max. reading error between Q_e (Transitional flowrate) and Q_{min} (minimum flowrate) not including Q_t . is $\pm 5\%$



Flow Error Curve :



Pressure Loss Curve :

