

Swing Check Valve

PN16/PN25/Class125/Class250

Fig. 5101-Bronze Disc Trim.

Fig. 5102-Rubber Disc Trim.

◆ Valve Standards

Complies with EN 12334, BS 5153, MSS SP-71 or AWWA C508.

◆ Working Pressure and Temperature

Size 50 to 600, working pressure PN16/Class125.

Size 50 to 300, working pressure PN25/Class250.

Temperature from -10°C to 120°C for bronze or EPDM disc trim.

Temperature from -10°C to 82°C for NBR disc trim.

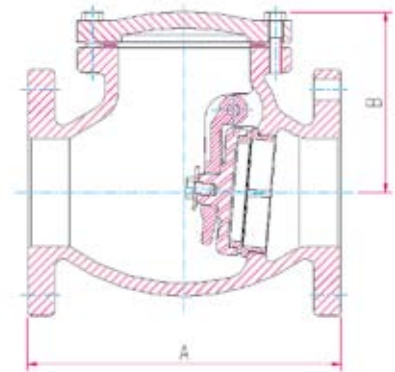
◆ Flange Types

EN1092-2 PN10/PN16/PN25, ANSI B16.1 Class125, ANSI B16.2 Class250, BS10 Table D/E, JIS 10K/16K.



◆ Materials Specifications

Part Name	Materials	EN Spec.	ASTM Spec.
Body*	Cast Iron	EN-JL1040	A126 Class B
Cover*	Cast Iron	EN-JL1040	A126 Class B
Side Plug	Brass	CuZn39Pb3	B16 C36000
Hanger Pin	Stainless Steel	BS970 420S37	AISI 420
Hanger	Ductile Iron	EN-JS1050	A536 65-45-12
Disc*	Cast Iron	EN-JL1040	A126 Class B
Disc Trim	Bronze	EN1982 CC491K	B62 C83600
	EPDM/NBR	Commercial	Commercial
Body Trim	Bronze	EN1982 CC491K	B62 C83600
Gasket	Graphite	Non-asbestos	Non-asbestos



Note*: Body, cover & disc materials are ductile iron when valve pressure rating is PN25 or Class250.

◆ Dimensions (mm)

Size	50/2"	65/2.5"	80/3"	100/4"	125/5"	150/6"	200/8"	250/10"	300/12"	350/14"	400/16"	450/18"	500/20"	600/24"
A	203	216	241	292	330	356	495	622	699	787	914	914	1016	1219
B	121	135	141	168	182	215	267	305	343	450	520	550	590	680

Wafer Double Door Check Valve

PN16/Class125

Fig. 5306

◆ Working Pressure and Temperature

Working pressure PN16/Class125.

Temperature from -10°C to 120°C for EPDM seat.

Temperature from -10°C to 82°C for NBR seat.

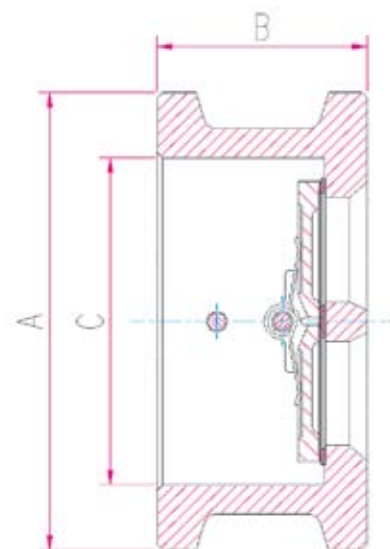
Temperature from -10°C to 150°C for Viton seat.

◆ Flange Types

EN1092-2 PN10/PN16, ANSI B16.1 Class125, BS10 Table D/E.

◆ Materials Specifications

Part Name	Material	EN Spec.	ASTM Spec.
Body	Cast Iron	EN-JL1040	A126 Class B
Disc	Stainless Steel	BS970 304S15	A351 CF8
Seat	EPDM/NBR/Viton	Commercial	Commercial
Hinge Pin	Stainless Steel	BS970 420S37	AISI 420
Stop Pin	Stainless Steel	BS970 420S37	AISI 420
Pin Retainer	Stainless Steel	BS970 304S15	AISI 304
Spring	Stainless Steel	BS970 304S15	AISI 304
Washer	PTFE	Commercial	Commercial
Gasket	EPDM/NBR/Viton	Commercial	Commercial



◆ Dimensions (mm)

Size	A			B	C
	Table D/E Flange	ANSI 125# Flange	EN1092-2 PN16 Flange		
50/2"	96	102	106	54	66
65/2.5"	109	121	126	54	78
80/3"	126	134	141	57	90
100/4"	158	172	161	64	115
125/5"	190	194	191	70	141
150/6"	210	220	217	76	170
200/8"	267	277	272	95	210
250/10"	331	337	327	108	273
300/12"	379	407	382	143	324
350/14"	446	447	442	184	356
400/16"	493	511	494	191	406
450/18"	560	546	554	203	457
500/20"	616	602	616	213	508
600/24"	724	715	733	222	600